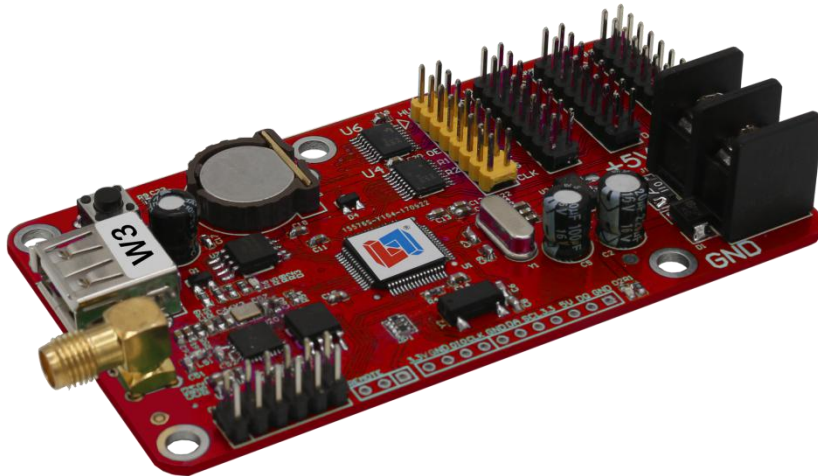
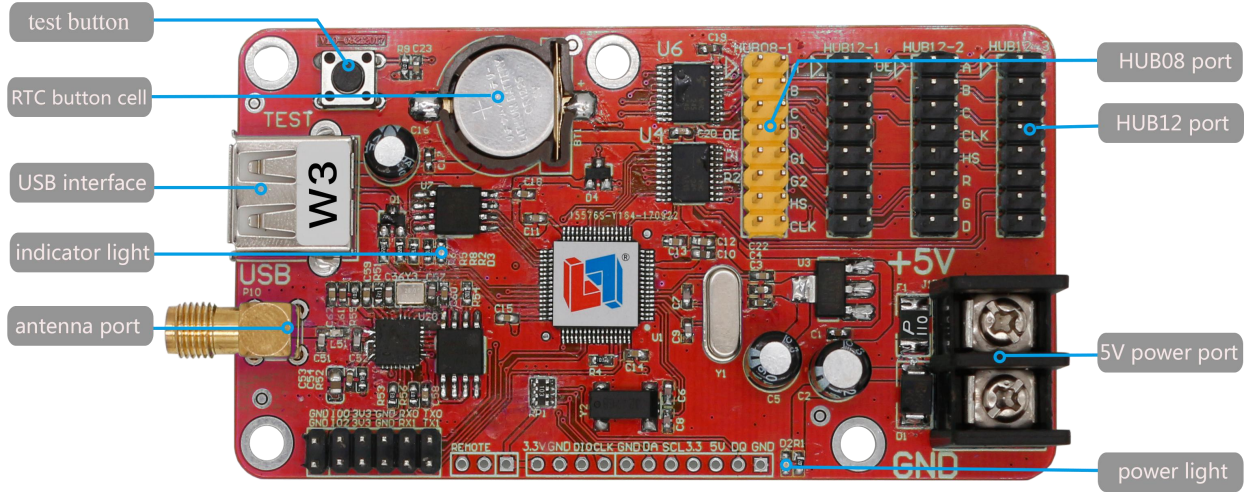


W3 SPECIFICATION

Version	Date	Reason
V1.00	9/27/2017	Document



Hardware



Product parameters

Storage	2MByte
Application	All kind of single &dual LED screen
Pixel	Single 48K pixel Double 24K pixel
Load	Single:1024*48 1536*32 Double:512*48 768*32
Software function	Cluster management/multi-area display/multi language
Program number	128 programs, each has 16 areas.
Type	subtitle/text/picture/program frame/area frame/animation/background/digital clock/timing area/dia plate area/static area/temperature/humiditure/inner code area
Frame	Linear frame for programs and areas.
Clock	Digital clock/ analog clock/ count up and down
Communication mode	WiFi (cluster management) and USB interface
Display interface	1*HUB08 , 3*HUB12
Sensor	Temperature sensor (water proof, high precision) , humiture sensor (high precision)
Brightness adjustment	16 levels, support to adjust in a period or automatically
Remote switch	Start up & off auto by timing, software or connect relay to LED screen power(independant power)
Startup picture	Startup picture and programs (arbitraty program)
Voltage	4.5V~6V, <2W
Working	-40°C-85°C
Secondary development	1. Support secondary development based on communications protocol 2. Support secondary development based on SDKs
Auxiliary software	LED screen manager(mobile phone APP),LED Player 6.0(choose WIFI mode)
Documents	<i>SPECIFICATION, User Manual of Cluster Management, etc.</i>

Dimensional Diagram

